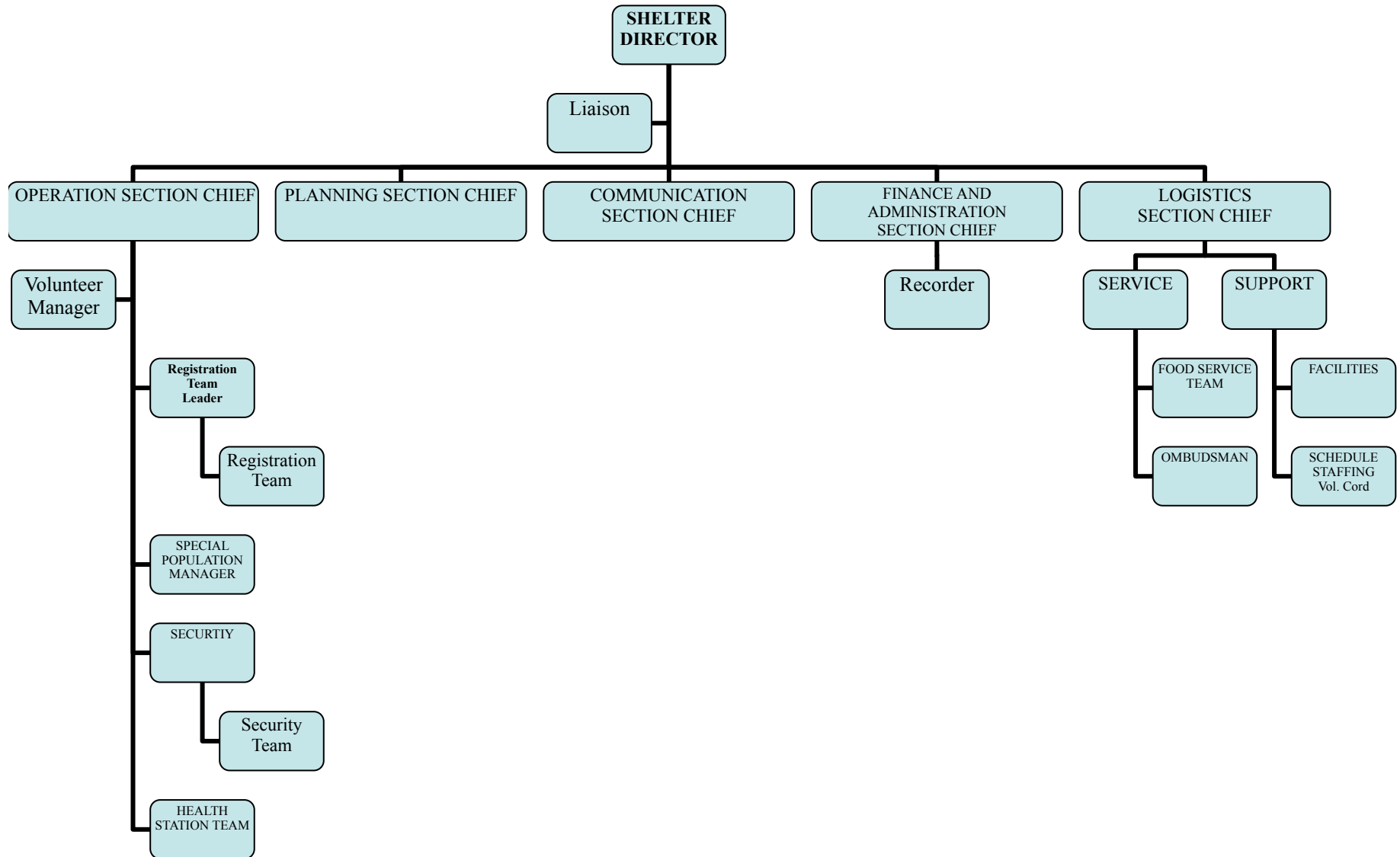


# MRC Shelter Simulation Class

## Incident Command System

### Shelter Operation



# MRC Shelter Simulation Class

## Job Action Sheets

### Sample Index

#### Shelter Director

- ❖ Shelter Operation Section Chief
- ❖ Shelter Logistic Section Chief
- ❖ Shelter Communication Section Chief
- ❖ Shelter Planning Section Chief
- ❖ Shelter Finance and Administration Section Chief
  - ⇒ Communication Team Leader
    - ☺ Communication Team
  - ⇒ Facility Team Leader
    - ☺ Facility Team
  - ⇒ Float Staff Team Leader
    - ☺ Float Staff Team
  - ⇒ Food Service Team Leader
    - ☺ Food Service Team
  - ⇒ Health Station Team Leader
    - ☺ Health (Medical and Mental) Team
  - ⇒ Registration Team Leader
    - ☺ Registration Team
  - ⇒ Security Team Leader
    - ☺ Security Team
  - ⇒ Volunteer Manager

## **MRC Shelter Simulation Class Job Action Sheets**

- ⇒ Volunteer Coordinator
- ⇒ Ombudsman
- ⇒ Special Population Manager

MRC Shelter Simulation Class  
Sample Posters

# Welcome!

To make this a safe and healthy place for everyone, please follow these simple shelter rules:



**NO PETS**

**NO DRUGS**



**NO WEAPONS**



**MRC Shelter Simulation Class  
Sample Posters**

*Please  
let the shelter staff know  
if you have concerns!*  
**THANK YOU!**

***Things you CAN DO IN A SHELTER:***

***PLEASE***

- **Respect quiet hours.**
- **Watch your children.**
- **Keep your area clean.**

**MRC Shelter Simulation Class  
Sample Posters**

- **Register when you arrive.**
- **Smoke in designated areas.**
- **Help us keep the shelter clean.**
- **Valuables are your responsibility.**
- **Sign in and out when entering or leaving.**
- **Keep food and beverages in designated areas.**

**THANK YOU!**